

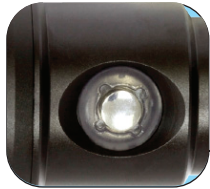
### Replacing the Battery Pack Inside the Body

- Unscrew the body and then slide out the old battery pack.



### Choosing between 4-Levels, Red and Narrow Beam of output

- Press the push button every time to choose the desired output level : I- output at 10%, II-output at 25%, III-output at 50%, IV-output at 100%.
- For 4-Levels setting, press the push button each time to change the level of output accordingly.
- For Red LED setting, two very short rapid presses of the button will switch to red light mode. Switch back to bright light mode with a slightly longer press and release.
- For Narrow Beam setting, press the push button for 2 sec to get narrow beam effect and back to normal when you press the push button once again.
- For OFF setting, press the push button one time after 1 sec of level selection or press the push button five times after 4-Levels setting.



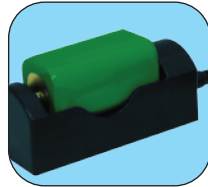
### Battery level indicator built-in

- Color of LEDs change from the time being. It will change from blue to green and green to red. When the red led flashes, it reminds people to charge up the battery.



### Charging the Battery

- Place the Li ion battery inside the Smart Quick Charger. There is no need to discharge after use.
- Charge time will depend on the remaining capacity in the battery and the surrounding temperature.



### Maintenance and Transportation

- After each dive, always rinse with fresh water. If the diving light will not be used for a prolonged period of time (more than a month), remove the battery from the light.
- In rare cases of flooding, discontinue use. Turn the light off immediately and rinse with fresh water. Let the components dry completely, and return it to Bigblue for service.
- Flooding damage cannot be repaired on site.

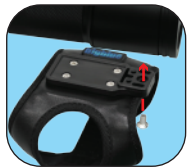
### Clean the light and Lubricate the O-Ring

- For good practice, put the light into fresh water for few hours after every dive.
- Dry it out and put the silicone grease on the O-Ring. Ready for other dive.

### Mounting the Goodman Glove



Goodman Glove



Fix the glove on the light with the supplied screw



Tighten by pulling the velcro

### For Right Hand User

- Unscrew the piece and place it upside down.



### Setup Using Photographic Arms and Clips\*

- Twist the knobs on the clips anticlockwise until loosened.
- Insert the ball joint of the Video Light between the gaps of the clips.
- Once the ball joint is inserted into the clips, secure its position by twisting the knobs on the clips clockwise.



\*Photographic Arms and Clips are sold separately

### Technical Specifications

Light Source	11 x XML LED + 6 x XPE Red LED
Light Output (Flood beam mode)	900 Lm ( level I), 2250 Lm ( level II) 4500 Lm ( level III) , 9000 Lm ( level IV)
Light output (Spot beam mode)	1300 Lm
Light output (Red color mode)	500 Lm
Casing Material	Aluminum alloy. Anti-corrosive anodized
Power Source	Li ion Rechargeable battery pack BATCELL18650 x 4
Angle of Light Beam	120° wide beam and 10° narrow beam
Color Temperature	6500K
Burn Time	3 hrs ( level IV), 6 hrs ( level III) 12 hrs (level II) and 30 hrs ( level I)
Maximum Depth	100m tested
Size	Dia. 63 x L. 150.3mm
Weight in Air	548g (including battery)
Buoyancy in Sea water	-203g (including battery)
Switching System	Push button with battery indicator
Front Glass	Tempered optical glass
Lanyard	Included

Specifications subject to change without prior notice

## VTL9000P

Li ion Rechargeable Battery  
High Power LED Video / Tech Light

**120°**  
Wide Beam  
**10°**  
Narrow Beam





- 10 x ultra high intensity LED delivers 9000 lumens, and an 120° perfectly even light spot, making it a must for the best video shoot results.
- 1x ultra high intensity LED delivers 1300 lumens, and an 10° strong penetrating light spot, making it ideal for tech-dive.
- The LEDs are maintenance-free, they guarantee a burn time of 50,000 hours, reducing the need for frequent bulb replacement.
- The 6500K white light reflects the true vibrant colors of the underwater surrounding while diving.
- The four levels power output lets you choose between 100%, 50%, 25% and 10% of total brightness.
- The push button not only makes it easy to change between the power output levels, but it is also designed to be insulated from all internal parts, eliminating the risk of leakage.
- Li ion rechargeable battery design comes with a smart charger, enabling you to charge in a few hours.
- Built in red LED for viewing shy little creatures and enhancing focusing performance.
- Removable yellow filter to achieve a warmer color tone for video shooting.
- Sturdy glove for hands-free operation underwater.
- The thermal protection system prevents the light from overheating by automatically cutting off its power in case of prolonged use on land, or exposure to temperatures above 70°C. As soon as the light cools off, power comes back on.

### Features



# VTL9000P



Li ion Rechargeable Battery  
LED High Power Video / Tech Light

### INSTRUCTION MANUAL



- Intended to be used with the custom-made BATTERY 18650x4 Li ion rechargeable battery pack only. Connect with the correct polarity (+ and -) only, incorrect connection can damage the unit.
- Fully charge the batteries before using for the first time.
- Use only the power adapters supplied with the charger. Using incompatible adapters may damage the charger or result in fire or electric shock.
- Charge time will depend on the remaining charge in the battery and the surrounding temperature.
- Do not charge near hot temperature, under direct sunlight, cover the charger with a blanket, or place under heavy pressure. If the temperature is too high, it may cause the battery to leak or rupture.
- When storing or carrying the battery, avoid direct contact with metal objects to avoid short circuit.
- The Li ion battery should not be dropped or be subjected to strong mechanical shock.
- Remove the battery from the light if it is not going to be in use for an extended period of time.
- Do not operate the battery or the charger if it has been damaged or subjected to shock.
- Do not dispose of in fire. Do not heat, deform, solder, dismantle or modify.
- Do not dispose of your rechargeable battery with general household waste. Check with your local collection system for electrical and electronic products.
- Do not short-circuit, overcharge, crush, drop, mutilate, generate with foreign objects, apply reverse polarity, expose to high temperature or disassemble packs and cells.
- Use only lithium-ion cells with a designated protection circuit and approved charger.
- Discontinue using the battery and/or charger if the battery gets excessively warm.
- The electrolyte is highly flammable and battery rupture can cause physical injury.
- Use a foam extinguisher, CO2, dry chemical, powdered graphite, copper powder or soda (sodium carbonate) to extinguish a lithium-ion fire. Only pour water to prevent the fire from spreading.
- If the fire of a burning lithium-ion battery cannot be extinguished, allow the pack to burn out on its own in a controlled and safe manner.

### Using the rechargeable Li ion battery

### Limited Warranty

1. Bigblue guarantees the proper operation of this product by the original retail purchaser under normal and intended use.
2. This warranty applies only to the original retail purchaser, which does not apply to commercial or rental use, nor is it transferable to third parties.
3. If the original retail purchaser detects defect in the materials or workmanship, return the product together with proof of purchase indicating the date of purchase to an authorized Bigblue dealer or Bigblue.
4. The warranty covers a period of up to one (1) year from the date of purchase. Warranty for rechargeable battery pack is valid for six (6) months only.
5. This limited warranty is in lieu of all other warranties. No other person or party is authorized to assume for Bigblue any other liability in connection with the sales of this product.
6. This warranty will be voided if the product or any of its parts have been tempered with, repaired, modified, transformed, adapted or damaged without authorization by Bigblue.
7. This warranty does not cover parts subjected to normal wear and tear, including and is not limited to the following: O-rings, battery pack, front glass (surface scratch or damage on impact).
8. This warranty does not cover damages due to impact, use in chlorinated or polluted waters, and extended exposure to heat sources.

### Bossk International Company Limited

Tel : (852) 3568 0773  
 Email : customerservice@bigblue.com.hk  
 Web : www.bigbluelights.com  
 www.bigblue.com.hk  
 MADE IN CHINA Patent Pending



1. Never put your battery on a charger and leave it unattended. Check the "time required to fully re-charge" and plan to have someone be in attendance.
2. Discontinue using charger and/or battery if the battery gets excessively warm.
3. If the battery does not charge in the approximate time suggested by the manufacturer contact the manufacturer to determine if the problem is with the battery or the charger. Do not continue charging the cell.

### Charging Li ion battery

1. Fully charge the battery before using it first time.
2. Use only the power adapter supplied with the charger.
3. Plug in the charger before you place the battery in the charger.
4. Make sure to connect with the correct polarity. Incorrect connection can damage the unit.
5. The red light on the charger will light up after a short time, indicating charging is taking place. If the red light does not light up, disconnect the battery and re-connect it again. If the red light does not light up after several attempts, the battery does not function.
6. Green light on the charger indicates fully charged battery. The battery should then be disconnected.
7. Charge the battery after each use. It does not have to be discharged before charging. Should charge the battery every month even you don't use it.
8. Do not turn on the light, if the light has turned off due to low battery capacity. Turning on the light with a fully discharged battery can damage the battery.
9. Charge time will depend on the remaining charge in the battery and the surrounding temperature
10. Remove the battery from the light if it is not going to be used for extended period of time

### Li ion battery charge and care

Congratulations on your purchase of our Bigblue product. The Bigblue Diving Light uses carefully selected materials that have met rigorous industry standards. With innovative manufacturing processes, and strict quality controls, we guarantee the reliability of all Bigblue diving products.

### Introduction

The VTL 9000P delivers a stunning 9000 lumens light output 10 x ultra high intensity LED and 500 lumens red light output 6 x high intensity red LED. It is a compact and versatile diving light with wide and even light beam, best suitable for video shooting. Also the light delivers 1300 lumens light output with narrow beam with strong penetrating hot spot, best suitable for technical diving as well. Combined with the self-contained 18650 x 4 Li ion rechargeable battery design, it actualizes the super convenience and performance which can meet the needs of discerning video professionals and technical divers.

