

26323 TTL Flash Trigger for Canon II - S **(For R6II from A571776 and R7 from** **A583226)**

Instruction Manual

FOREWORD

Thank you for your purchase of a NAUTICAM product.

At NAUTICAM, we pride ourselves in the ability to recognize the requirements of professional as well as amateur underwater photographers and fulfill them through the innovative designs of our products. We strive to achieve a high level of user-friendliness by allowing stress-free installation and easy operation of all important functions of the camera.

Please read this manual carefully before using the product, this will maximize its performance as well as its lifetime.

WARRANTY

All NAUTICAM Products are warranted against any material and manufacturing defects for two years from the date of purchase for consumer use. This warranty only applies to products purchased from authorized NAUTICAM dealers and does not extend beyond the original retail purchaser.

To return your product for service, please contact your regional authorized service center(s). Please note that this warranty only applies when the product is purchased in the territory where the service center is located.

NAUTICAM does not hold responsibility for damage, of any nature, to any equipment used with and/or placed within our products.

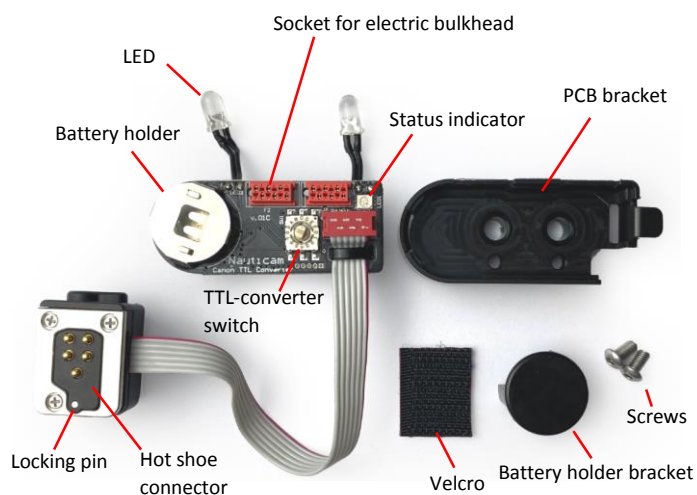
NAUTICAM accepts no liability for any loss of captured images or the inability to capture images even if it is due to the malfunctioning of our products.

Unauthorized modifications and/or repairs of our products will automatically invalidate the warranty.

PRECAUTIONS

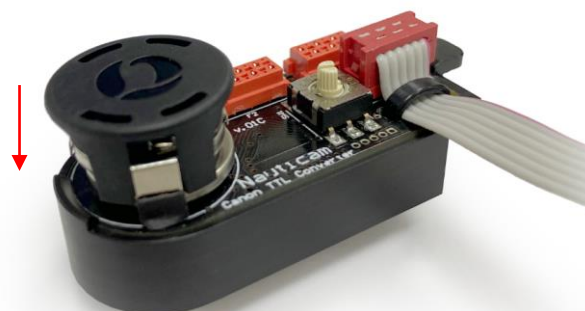
- Use only batteries approved for use in this product, do not mix old and new batteries.
- Check the battery terminals before installing into the product.
- Remove batteries for storage, do not store the product in an environment of high humidity.
- Do not leave the product in direct sunlight for prolonged periods.
- Keep out of reach of children, failure to do so could result in injury.
- Defective products should be shipped to our distributors for service, unauthorized disassembling and/or modifications could result in malfunction.

IDENTIFICATION OF PARTS

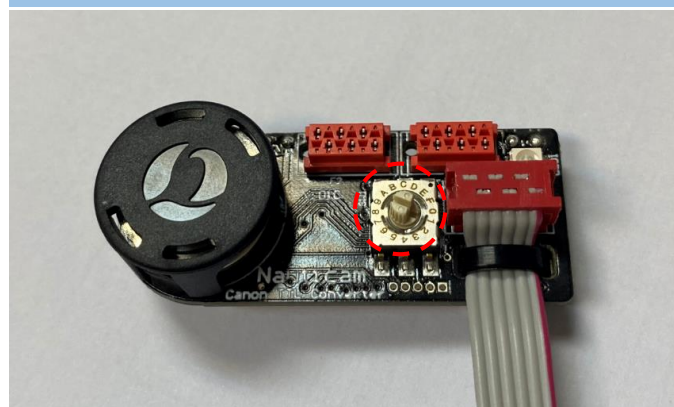


BATTERIES INSTALLATION

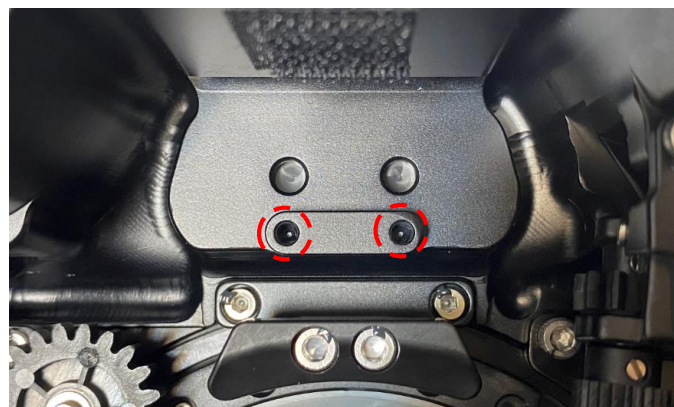
Insert 2 x CR1632 batteries into battery holder, please check that the "+" terminal of each battery is at 'Up' position. Gently push the battery holder bracket down onto the battery holders. Reverse the above steps to remove the batteries.



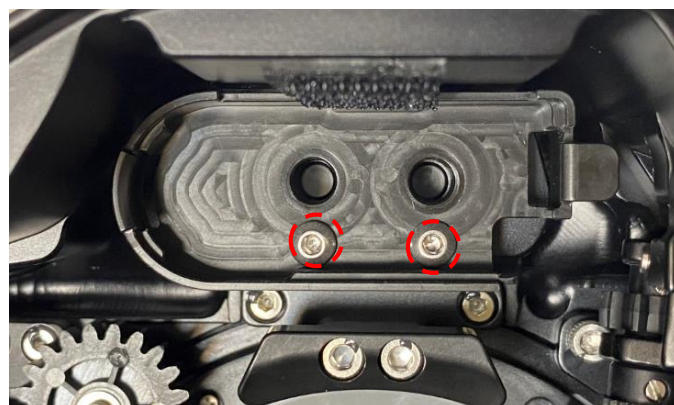
HOUSING INSTALLATION



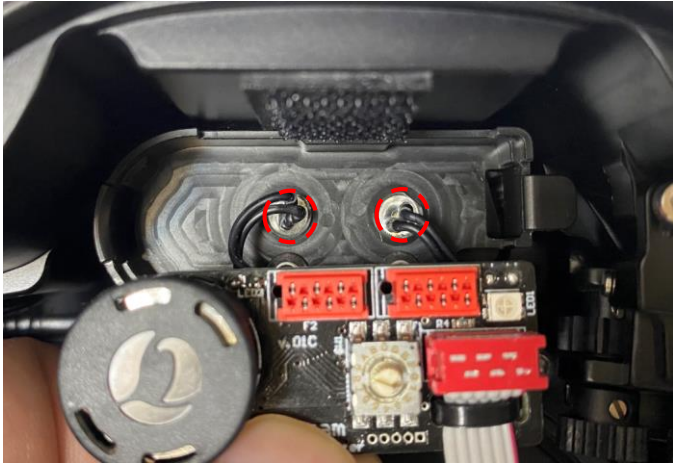
Set the TTL-Converter rotary switch according to your strobes



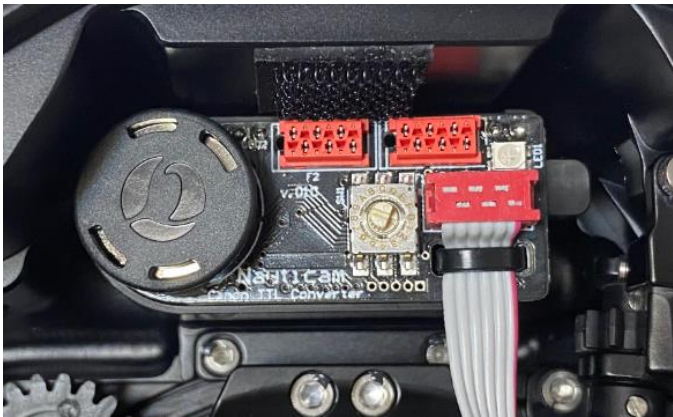
Open the housing and find the two screws hole as indicated above.



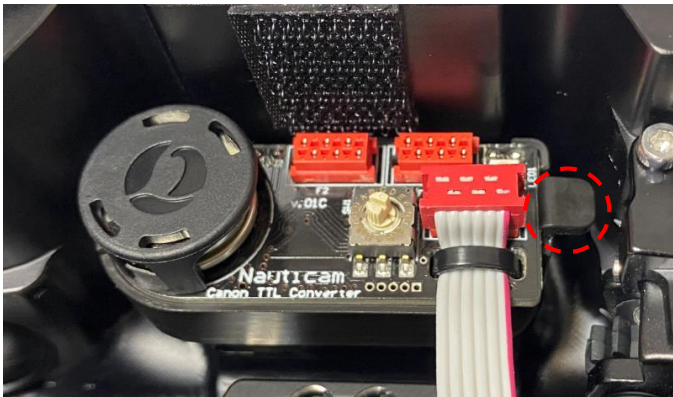
Install the PCB bracket with the provided two screws.



Insert both LEDs into the two holes on the PCB bracket



Simultaneously place the PCB board inside the bracket from the left side first. Then gently press the PCB board down on the right side until hear a “click” sound.



To remove the PCB board from bracket, press the indicated handle slightly and lift up the PCB board.



Slip the hot shoe connector into the camera's hot shoe until it cannot go any further. Turn the lock lever clockwise to secure the hot shoe.

Reverse above steps to detach the hot shoe when removing the camera from the housing.



Stick the Velcro onto the housing and place the hot shoe as shown above.

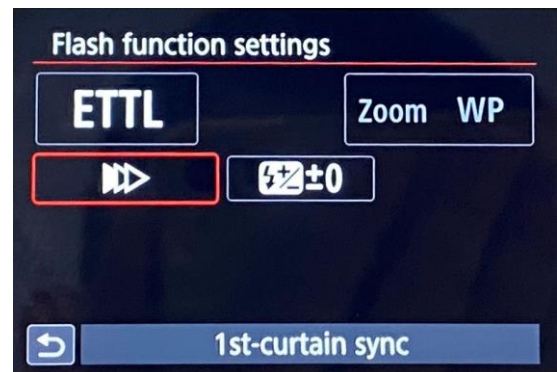
FLASH TRIGGER SETUP

• Setting the Flash Functions by Camera Operation

When the flash trigger is attached to an EOS DIGITAL camera with an external flash control function, the following settings are available through camera menu operations. See camera's instruction manual for the setting method and function.

Go to “External Speedlite Control” under “Shoot” menu, and scroll down to “Flash function settings”.

Camera recognizes Canon compatible TTL device on its hot shoe and confirms it with screen as below.



SHOOTING IN TTL MODE

Set TTL-Converter rotary switch according to your strobe types:

- 0 – Simple Manual Mode (no TTL, pre-flashes are disabled)
- 1 – Inon Z-240 / Z-330
- 2 – Inon D-200, D-2000, S-2000
- 3 - Sea & Sea YS-D1
- 4 - Sea & Sea YS-D2 (electrical only)
- 5 - Sea & Sea YS-D3/D3II (electrical only)
- 6 - Sea & Sea YS-250
- 7 - Ikelite DS160/DS161
- 8 - Ikelite DS160II
- 9 - Ikelite DS230
- A - OneUnderwater F1
- B - Retra Pro X and Prime X

STATUS INDICATOR

The status indicator will display the battery status as well as modes selected. It will flash GREEN/BLUE/RED when shutter release is triggered.

- **GREEN:** In TTL Mode. Battery Ok
- **BLUE:** In Manual Mode. Battery Ok.
- **RED:** Battery low, replace battery.

STORAGE

- After shooting please switch off the camera.
- Disconnect the hot shoe connector from the camera's and stick onto the Velcro after use to avoid any accidents.
- For a long-time storage, please remove batteries from TTL-Converter.

OPERATION

The TTL Function of this flash trigger will be workable in “P” Program AE, “TV” Shutter Priority AE, “AV” Aperture Priority AE and “M” Manual Exposure camera modes.

SPECIFICATIONS

Construction:	Body: PC+ABS
Dimensions:	Approx. 55.6×24.0×24.0mm
Weight:	Approx. 31.4g (w/ batteries installed)
Battery:	CR1632 x 2pcs
Operation:	TTL or Manual
Flash Capacity:	Approx. 10000 times
Compatible housings:	NA-R6II (from A571776), NA-R7 (from A583226)
Compatible strobes:	INON: Z-240/Z-330, D-200, D-2000, S-2000. Sea&Sea: YS-D1, YS-D2 (electrical only), YS-D3/D3II (electric only), YS-250. Ikelite: DS160/DS161, DS160II, DS230. OneUnderwater F1, Retra Pro X and Prime X

For R6II housings before serial number A571776, #97387 Conversion kit is required.

For R7 housings before serial number A583226, #97388 Conversion kit is required.